

The logo for SOSHIN, consisting of the word "SOSHIN" in a bold, sans-serif font inside a white oval with a dark border.

SOSHIN

E

TH

2017

Social Responsibility & Environmental Report

双信電機株式会社
SOSHIN ELECTRIC CO., LTD.

Soshin Powertech Co., Ltd.
Soshin Device Co., Ltd.
Risshin Electronics Co., Ltd.
Soshin Electronics (M)Sdn. Bhd.

Business Summary

2017 Social Responsibility & Environmental Report

Contents

■ Business Summary and so on

Corporate profile & business locations	1
Business domain & related products	2
Message from the President / Corporate governance	3
Guidelines for corporate behavior	4

■ Social Responsibility Report

Respect for humanity and assurance of a comfortable working environment	5
Cooperation with local communities and promotion of social action programs	6

■ Environmental Report

Environmental management system	7
Outline of environmental preservation activities	8
Environmental accounting	9
Mass balance / Management of contained chemical substances	10
Approach to reduction of environmental loads	11
Examples of energy saving measures	12
Approach to resource utilization	13
Questionnaire	14

Editorial policy

This report presents the Group of Soshin Electric companies' approach to society and the environment.

【Period covered】

From April 2016 to March 2017

【Coverage】

Soshin Electric Co., Ltd.
Soshin Powertech Co., Ltd.
Soshin Device Co., Ltd.
Risshin Electronics Co., Ltd.
Soshin Electronics (M) Sdn. Bhd.

Issued in June 2017

■ Corporate Profile (As of the end of March 2017)

Company name : Soshin Electric Co., Ltd.
URL: <http://www.soshin.co.jp>

Tokyo Head Office
No. 1-1-1, Shibaura, Minato-ku, Tokyo 105-0023, Japan
Tel. 81-3-5730-4500 Fax. 81-3-5730-4504

Established in : December 1938
Incorporated in : April 1944
Capital : 3,806 million Japanese yen
(As of the end of March 2017)
Number of employees : 816 (Total)
(As of the end of March 2017)

■ Business Locations

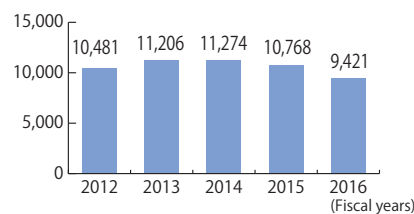
【Sales offices in Japan】
Tokyo Operating Headquarters
Osaka office / Nagoya office / Saku office / Kyushu office

【Domestic plant and R&D location】
Asama Plant / Chikuma Technical Center

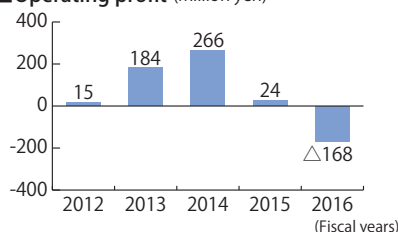
【Group companies】
Soshin Powertech Co., Ltd.
Soshin Device Co., Ltd.
Risshin Electronics Co., Ltd.
Soshin Electronics (M) Sdn. Bhd.
Soshin Electronics of America Inc.
Soshin Electronics Europe GmbH
Soshin Electronics (SZ) Limited
Taiwan Soshin Electric Co., Ltd.

■ Financial Highlights

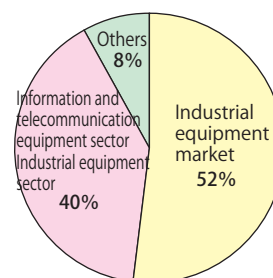
■ Sales amount (Million yen)



■ Operating profit (Million yen)



■ Sales ratio per market (2016)



Business Domain & Related Products

The Group of Soshin Electric companies supplies electronic components meeting the needs of the times and expectations of customers in the industrial instrument and information and telecommunication equipment markets.

Industrial equipment sector

• Noise related-field

Needs are growing for countermeasures against disturbance due to noises arising in fields of industries such as semiconductor manufacturing facilities and machine tools, equipment supporting our daily life such as air-conditioners and elevators, and environmental and energy-saving facilities such as solar power generation where reduction of the load on the global environment is anticipated.

Our EMC products have played a key role in many industrial fields as a solution for issues related to noises developing in these equipment and facilities.

Furthermore, our range of business includes total support for customers such as provision of noise-measuring and diagnosing services on site or in our large radio-wave shield chamber.

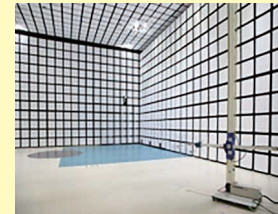
• Car and railway electronics

In automobiles where parts are required to be highly reliable, noise filters and capacitors are used for quick charging of plug-in hybrid electric vehicles (PHEV) and electric vehicles (EV) which are gaining market acceptance.

Railway vehicles and rail traffic control systems are other areas where a variety of our filters and capacitors work to support safety and ease.



Noise filter for PV systems



Asama radio-wave shield chamber



On-site noise-testing vehicles



Noise filter



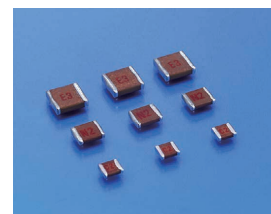
Film capacitor

Information and telecommunication equipment sector

• For information and telecommunication infrastructures
RF parts such as couplers, filters and capacitors support communication systems including base stations for mobile phone systems.



LC filters



Chip mica capacitors

• For telecommunication terminals

Multilayered dielectric filters are adopted for ever-advancing smartphone, wireless LAN systems for tablet PC terminals and for Bluetooth communication modules.



Couplers



Multilayered dielectric filters

A Message from the President ●



President
Takashi Kamioka

Under the current operating environment, where business enterprises are required to correspond by diversifying as business and social situations change, there is a need for them to adapt to varying situations. Furthermore, the importance of business enterprises' carrying out their social responsibilities is growing as a matter for their survival.

Cases have been seen in recent years where the company value has been damaged due to scandals and subsequently, the continuity of the companies involved has been endangered, just to name one instance. To prevent such situations from occurring, we have built a system for appointment of outside board members and auditors, and arranged the establishment of a help line. Moreover, it is important for the top management of business enterprises to have a healthy awareness of these issues. For this, we will pursue raising awareness of CSR as well as promoting a deeper level of understanding by every constituent member of our group companies.

The president's message in 2016 about heightened awareness included a message for encouragement of better consciousness regarding the importance of compliance and provision of guidance and advice from outside specialists. In terms of reduction of environmental loads, we have made vigorous efforts to integrate production locations, improve productivity and decrease material losses through reduction of defective products. Additionally, in regard to social contribution, we maintained the wave of exchange with local communities through customary sporting events and volunteer activities.

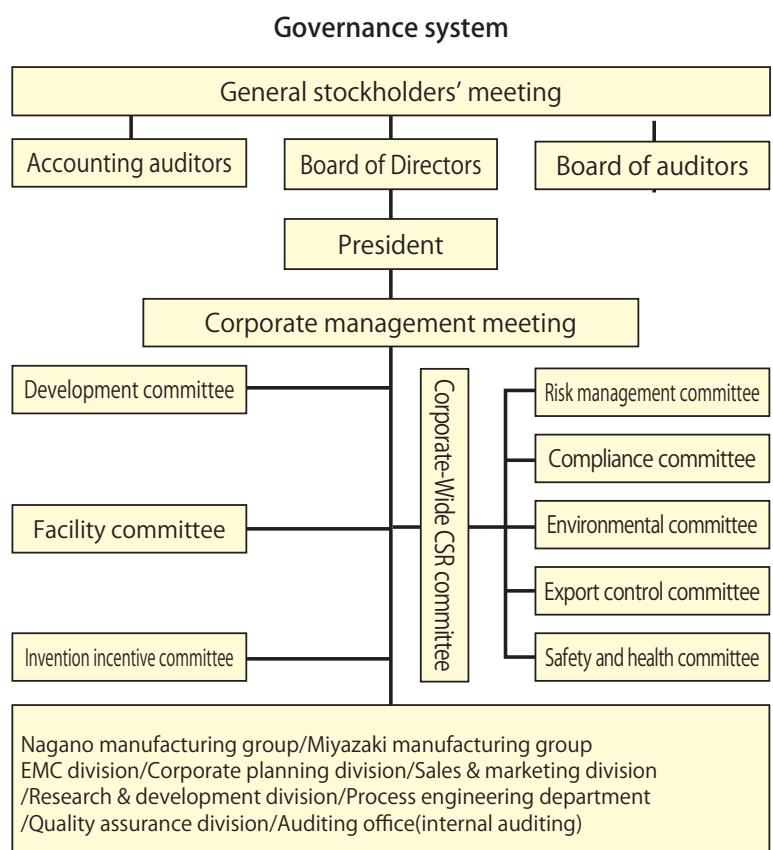
We are committed to trying hard to enhance our company value as well as to fulfilling our social responsibilities through activities such as those mentioned above.

◆ Corporate Governance

The Group of Soshin Electric companies has positioned enhancement of corporate value as one of our key management issues.

We regard the enhancement of corporate governance as an important measure that raises the legality of the business activities and transparency of corporate management, leads us to become an entity trusted by every stakeholder (stockholders, customers, company employees, suppliers and relevant local communities) and is conducive to the rise of corporate value.

To make them a reality, we strive for ensured compliance with laws by identifying the responsibilities of the Board of Directors' Meeting and Auditors' Meeting such as adjustment of the management organization, improved management efficiency and enhancement of the management monitoring function. Establishment of relationship of mutual trust through ensured gaining of stockholders' privilege and equality and promoted dialogues are other matters we seek.





Soshin Electric Co. Group's Guidelines for Corporate Behavior

I Realization of corporate philosophy

[1] Provision of products that better contribute to social environment

From a long-term global perspective, we will commit ourselves to create new value by providing products and services that protect the global environment and realize safety and security in society. We will gain trust from our customers and society by seeking quality and safety.

II Policy to engage in business activities

[2] Disclosure of corporate information

We will release, in an accurate and timely manner, information sought by the public, including information on our management, finance, products or services to improve transparency in management and gain society's trust in NGK group companies.

[3] Total enforcement of compliance and risk management

We will abide by the laws and rules of each country and area in which we do business and will enforce our compliance thoroughly, respecting international arrangements that are applicable to us.

We will develop human resources who are sincere and have high ethical standards. In addition, through our efforts to build an internal control system and implement risk management, we will protect our corporate assets and credit, as well as the rights of third parties.

[4] Respect for humanity and assurance of comfortable working environment

We will hire and treat people in a proper and fair manner and provide a safe and pleasant working environment in which our people can work comfortably without sacrificing their family life. We will make available opportunities that people with versatile talent can try and will support the development of human resources through the acquisition of knowledge and expertise.

We will prevent bullying, discrimination, harassment or any other acts that violate human rights. If there is a human rights violation, we will take appropriate action in an expeditious manner.

[5] Implementation of fair, free and transparent transactions

As a good and equal partner, we will implement fair, free and transparent transactions in search of mutual benefit with our business partners.

In addition, we will promote our commitment to discharge our corporate responsibility for society throughout the supply chain used by the NGK group companies.

III As a member of society

[6] Preservation of global environment

We will contribute to the preservation of the global environment by committing ourselves to take the lead in reducing environmental burdens at every location and in every process that is involved in our business activities. We will cooperate in efforts with local communities to preserve the environment and will also actively support our employees' efforts.

[7] Cooperation with local communities and promotion of social action programs

We will actively commit ourselves to contributing to society, satisfying the needs of local communities with our interest in the social tasks required by each country and local community in accordance with our objective to become a corporate citizen that can be trusted by local communities.

[8] Communication with stakeholders

Through communication with all of our stakeholders, including customers, business partners, shareholders, employees and members of local communities, we will enhance their understanding of the NGK group companies and review corporate activities based on comments forwarded to us. We will use these in our efforts to accomplish our social responsibilities.

Social Responsibility Report

Respect for Humanity and Assurance of a Comfortable Working Environment

◆ Basic employment policy

We at the Group of Soshin Electric companies have tried to ensure employment stability through the establishment of manpower plans ascertaining to mid- to long-term business development. Such efforts included planned employment of new graduates and active deployment of internal job rotation, placement of the right people with necessary ability and experience in the right job, and promotion of activities that helped employees find their jobs challenging without needing to exercise extra care.

◆ Esteem for individuality and diversity

Our employment level of disabled people was 2.64% (as of Apr. 2017), which exceeded the legally set 2.0% minimum. As a result of the establishment of a re-employment system for employees who have passed mandatory retirement age, flexible working arrangements, including full-time and part-time work programs, are provided to fit individuals' post-retirement plans.

◆ Realization of work-life balance

Many female employees have taken up the opportunity for pre-natal and post-partum maternity leave and infant care before returning to work. Furthermore, refreshment holiday and planned paid holiday systems are provided for employees to refresh their minds and bodies.

◆ Health and safety

The Group of Soshin Electric companies has actively made health and safety activities as a matter of top priority aiming for zero occupational accidents, in addition to ensuring employees' health and safety and promoting more comfortable working environments.

Our major activities include those where risk factors arise. Training for dealing with near-miss incidents and danger prediction has been provided to employees in conjunction with the National Industrial Safety Week and National Industrial Health Week. Suggestions made by them have achieved great results. Moreover, mutual patrolling of plants for facility accident prevention has been a semiannual event to ensure safety.

For promotional purposes of employees' good health, we have a healthcare program in place by having company nurses on duty and actively pursuing good physical and emotional health for employees. Since last year, employees have been given a stress check.

These activities have kept the Group of Soshin Electric companies free from serious work-related accidents for the past six years. With safety and good health always regarded as matters of top priority, our activities will continue.

◆ Enhancement of healthy mental state

The Group of Soshin Electric companies has arranged study sessions for acquisition of knowledge about mental disturbance, self-care and line care through consolidated services by industrial physicians, consultant physicians and health nurses to ensure employees' mental health.

In addition, restrictive measures against excessively long working hours have been rigorously implemented through control of overtime work, training of managers and strict observance of the previously established no-overtime day program.



Provision of an opportunity for collective learning about line care



Seminar for lifesaving technique (AED) provided by firefighters from the Saku Fire Station

Social Responsibility Report

C ooperation with Local Communities and Promotion of Social Action programs

International Volunteer Day, a day of concurrent action for contribution to society

We, the business enterprises residing in the building where we are headquartered, jointly sold fair-trade goods to support their producers in developing countries.

*"Fair trade" is the term used to describe the mechanism that supports producers' lives by purchasing their products at reasonable prices.



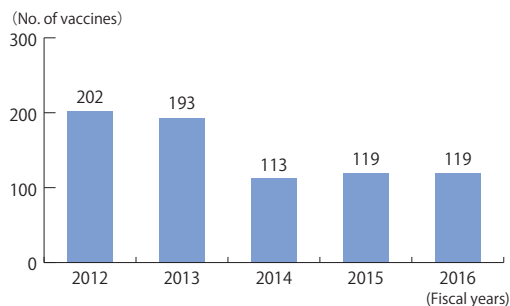
Participation in an evacuation drill staged by the General Support Center for Senior Citizens

Soshin Powertech Co. supported the evacuation drill staged by the neighboring General Support Center for Senior Citizens.



Eco-cap Campaign

Bottle caps collected since 2008 through this campaign reached a quantity equivalent to 119 vaccines in 2016.



Interaction with local communities through sports events

The 16th Soshin Cup Tennis Tournament



The 31st Soshin Volleyball Meet



Acceptance of internship

Local high school students took a factory tour and undertook work experience in the Nagano and Miyazaki areas.



Christmas presents

Soshin Powertech Co. and Soshin Device Co. presented Christmas presents to their neighboring nurseries.



Environmental Report

Environmental Management System

Environmental policy of the Group of Soshin Electric companies

1. Compliance with legislation, pacts, agreements with customers and voluntary standards
2. Identification of environmental objectives and organized continuous promotion of activities with local communities to reduce environmental loads
3. Development, design, production and marketing of environmentally-friendly products
4. Implementation of preventative measures and monitoring of environmental pollution
5. Continuous encouragement of education, training and enlightenment activities to raise awareness of the roles and responsibilities of employees, as well as all other people involved in our business activities

◆ System of promoting environmental preservation activities

Decisions on policies and tactics of the Group of Soshin Electric companies regarding environmental preservation will be made by the "Environmental Committee" which the Director responsible for environmental matters chairs. The policies and tactics thus decided will be disseminated across the company via the vice-top management (plant / site manager) and the manager responsible for environmental matters for each site.

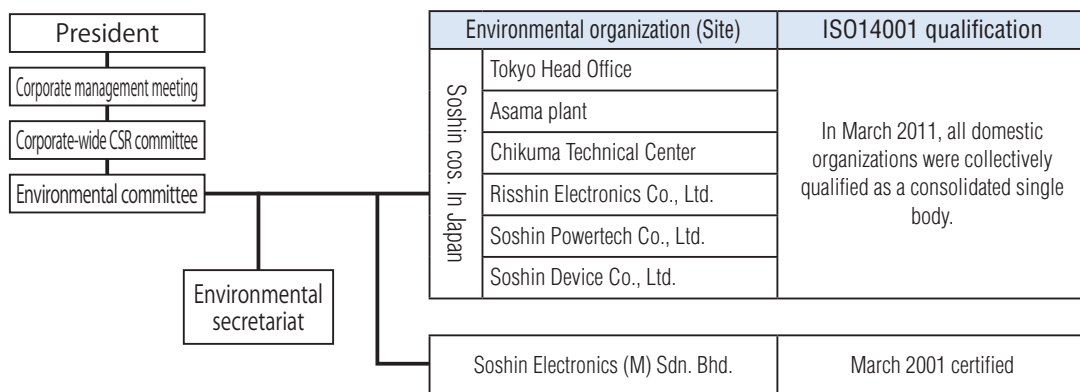
Activities for which the environmental organization is responsible include reciprocally holding an environmental meeting and energy management meeting every month, as well as the Environmental Committee held semi-annually. These meetings are to control the progress toward the targeted amounts of CO₂ emissions and industrial waste discharged, exchange information on the environment and continue the promotion of the environmental preservation activities.

◆ Qualification for ISO14001 and environmental Audits

For ISO14001, the international standard for the environmental management system, the Asama Plant qualified in 2000, followed by successful qualification of all other Japanese production sites in 2002. In 2011, all Japanese organizations including the Head Office (administration and sales / marketing departments) collectively qualified as a consolidated single body. (Soshin Electronics Malaysia has been qualified for ISO14001 by another qualification agency.)

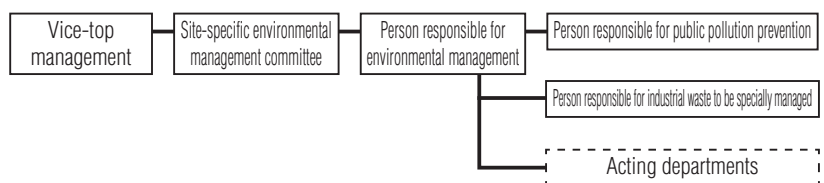
Our environmental audit is comprised of audits conducted by an external qualifying organization, environmental assessments by our Environment Control Office and internal environmental audits by the execution department. The total number of our internal auditors was 175 as of the end of Mar. 2017.

Environmental preservation organization



Audit scene by the ISO14001 qualification organization

Environmental organization of each production site



0 Outline of Environmental Preservation Activities

We have tried to preserve the environment by setting environmental objectives and targets to accomplish the objectives as one element of our activities.

◆ Activity report for 2016 and targets for 2017

【CO₂ emission amount】

We achieved the target for reduction of CO₂ emissions which was part of 2016 activities for environmental load reduction.

As an approach to CO₂ emission reduction continuing from 2016, we will study a step-by-step change over to energy-saving facilities including lighting with LEDs in 2017.

Action will continue for productivity improvement, efforts to reduce losses and loads of facility operations and elimination of waste through energy-saving patrol.

【Amount of discharged industrial waste】

In 2016, we discharged industrial waste in line with the previously established plan and achieved the target. We will carry on the same idea in the future.

【Enhanced control of contained chemical substances】

Restriction and control of substances usable for products are getting increasingly stricter, as evidenced by the regulations related to phthalic acid esters required by the RoHS directive and year-by-year additions by REACH Regulations of substances to be controlled.

We control such chemical substances in line with the latest regulations based on the Soshin Electric Co. Green Procurement Guidelines. To control chemical substances contained in product component parts, we audit suppliers for their environmental quality to ensure adherence to the Green Procurement activity. Within the Group of Soshin Electric companies, environmental audits have been conducted for tighter control of contained chemical substances.

【Environmental complaints and incidents】

In 2016, we had no complaints or incidents related to environmental matters. We will continue our activities for local environment preservation to prevent any environmental matter-related complaints or incidents from happening in 2017.

◆ Main environmental preservation activities

Item	Achievement in 2016			Targets for 2017
	Target	Achievement	Self-evaluation	
Environmental management system (ISO14001)	<ul style="list-style-type: none"> We will continue environmental education and enlightenment activities. We will carry on specific actions toward a successful qualification assessment for the transfer of the Environmental Management System from the 2015 edition to the 2017 edition. We will comply with environmental legislation. 	<ul style="list-style-type: none"> The environmental policy was disseminated and education of environmental targets provided. We updated the Environmental Manual and related specification documents to accommodate the stipulations of the 2015 Environmental Management System. We reviewed a list of environmental legislation and regulations to ensure that our environmental assessment covered every item. 	○	<ul style="list-style-type: none"> We will continue environmental education and enlightenment activities. We will provide each department and internal auditing personnel with training and horizontal deployment to qualify for the Environmental Management System 2017 on the occasion of updating from the 2015 issue. We will comply with environmental legislation.
Prevention of global warming	<ul style="list-style-type: none"> We will reduce domestic CO₂ emissions by 10.3% from the 2015 achievement. (We will reduce the CO₂ emission amount divided by sales amount by 18.6% from the 2015 achievement.) 	<ul style="list-style-type: none"> Domestic CO₂ emissions were 6,785 tons in 2016, lower by 9.9% than 7,505 tons of 2015. (The CO₂ emission amount divided by sales amount rose by 1.4% over that of 2015.) 	×	<ul style="list-style-type: none"> We will keep the CO₂ emission amount in Japan at 4.0% max., of that of 2016. (We will reduce the CO₂ emission amount divided by sales amount by 3.1% from the 2016 achievement.)
Activities for biodiversity preservation and waste management	<ul style="list-style-type: none"> We will keep the amount of discharged waste at no greater than 16.3% of the 2015 performance. (We will continue zero emissions.) 	<ul style="list-style-type: none"> The waste discharged in 2016 was 119 tons, a 3.3% reduction from 123t of 2015. (We have continued zero emissions.) 	○	<ul style="list-style-type: none"> We will keep the increase of the amount of discharge at no greater than 21% over the 2016 achievement. (We will continue zero emissions.)
	<ul style="list-style-type: none"> We will support NPO organizations working to protect wild life. 	<ul style="list-style-type: none"> We supported NPO organizations. 	○	<ul style="list-style-type: none"> We will continue to support NPO organizations.
Adequate control of chemicals and reduction of hazardous chemicals	<ul style="list-style-type: none"> We will continue inspection with an X-ray fluorescence spectrometer. We will revise the Soshin Electric Co. Green Procurement Guidelines. We will conduct environmental surveys at suppliers to promote further compliance with the green procurement program. 	<ul style="list-style-type: none"> We conducted receiving inspections for incoming parts to be inspected to detect abnormal lots and addressed them appropriately, when necessary. We revised the Soshin Electric Co. Green Procurement Guidelines. We promoted green procurement by conducting supplier environmental quality surveys as planned. 	○	<ul style="list-style-type: none"> We will continue inspection with an X-ray fluorescence spectrometer. We will conduct environmental surveys at suppliers to promote further compliance with the Green Procurement Program. We will observe the chemSHERPA scheme used industry-wide for communication of information on chemicals contained in products.
	<ul style="list-style-type: none"> We will confirm the compliance status of "lead-free" identification. 	<ul style="list-style-type: none"> We conducted environmental assessments and verified successful compliance. 	○	<ul style="list-style-type: none"> We will carry on verifying at all Soshin companies' compliance with the "leadfree" identification program.

Environmental Report

E nvironmental Accounting

◆ Introduction of environmental accounting

The Group of Soshin Electric companies introduced environmental accounting in 2001. Environmental accounting is for the purpose of gaining a quantitative grasp of the effectiveness of investment and expenses made for environmental preservation.

The guidelines developed by the Ministry of the Environment were complied when the 2016 performance data (from April 1, 2016 to the March 31, 2017) was compiled.

◆ Economic effects coming from environmental preservation measures

The economic effects in 2016 were 11.28 million yen. Of this, global environmental preservation effects decreased by 41.6% and resource recycling effects by 53.7% from a year earlier.

◆ Environmental preservation costs

Out of the total environmental preservation costs the Group of Soshin Electric companies expended in 2016, 1.03 million yen was invested for the introduction and replacement of energy saving facilities. This was a 95.7% decline year-on-year.

The total expense was 25.89 million yen, a year-on-year reduction of 16.1% with management costs by 17.9% and social activity costs by 51.6% as the major reduction items.

◆ Environmental preservation costs and economic effects

Unit: 10,000 yen

Category	Specifics of the main measures	Investment		Expenses		Economic effects	
		2015	2016	2015	2016	2015	2016
Pollution prevention cost	Investment and expenses for pollution prevention	0	0	203	244	-	-
Global environmental preservation cost	Investment and expenses for CO ₂ reduction such as introduction of energy saving equipment	2,424	103	71	156	775	453
Resource recycling cost	Investment and expenses for effective use of resources, including water saving, and reduction, recycling, processing and disposition of waste	0	0	1,054	1,028	1,458	675
Upstream / downstream costs	Costs for controlling environmental loads that arise in the business upstream and downstream	0	0	0	0	-	-
Administration cost	General and labor expenses necessary for environmental preservation such as acquisition and maintenance of ISO14001 qualification, environmental education, and monitoring and measurement of environmental loads	0	0	922	757	-	-
R&D cost	Expenses and labor charges required for R&D, planning and designing of products for environmental impact reduction and also for R&D of products contributing to environmental preservation	0	0	0	0	-	-
Social activity cost	Expenses for preservation of nature, greening and support for the local environment, public announcements of environmental information and advertisements for environmental matters	0	0	834	404	-	-
Environmental remediation cost	Expenses for improvement of contaminated soil and recovery of destroyed nature	0	0	0	0	-	-
Total		2,424	103	3,084	2,589	2,233	1,128

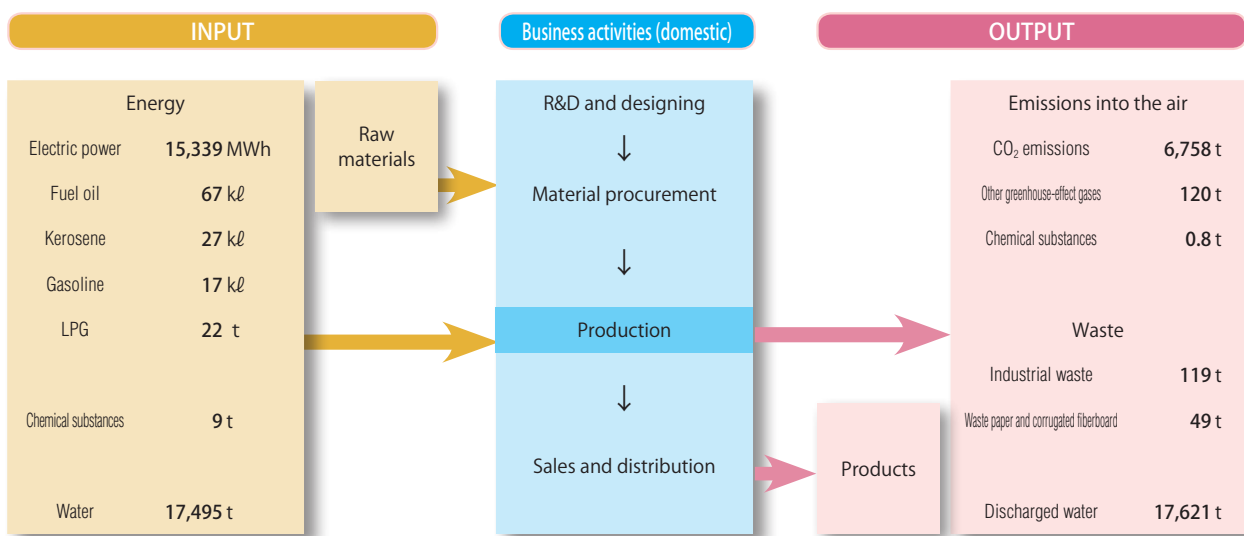
Mass Balance (Inputs and outputs)

This section describes resources and energy input for domestic business activities by the Group of Soshin Electric companies, products, waste and other discharged items that resulted from domestic business activities.

Outline of inputs and outputs

Input comprises parts, raw materials, energy, chemical substances and water necessary for business activities while output comprises product, CO₂ emissions, water and waste developed incidentally to production activities.

The Group of Soshin Electric companies strives to reduce as much as possible input from the aspects of energy saving to prevent the exhaustion of natural resources. This is an attempt to reduce output other than products.



Management of Contained Chemical Substances

Survey of contained chemical substances

We made our products free from lead and eliminated other prohibited substances from products in 2006 and the Group of Soshin Electric companies has since then fully complied with the requirements of the RoHS Directive, with the exception of several products made to meet customers' requirements.

In an attempt to respond to requests from customers for timely provision of information on chemical substances contained in products, we have set up a database for management of chemical substances.

Analysis with an X-ray fluorescence spectrometer

Parts and materials that possibly contain prohibited substances will be subjected to screening with an X-ray fluorescence spectrometer to confirm that they are free from prohibited substances.

Green procurement

The Group of Soshin Electric companies has proceeded with procurement of parts and materials with the minimal possible environmental loads. For this, we issued guidelines for green procurement, Rev. 6 in Apr. 2016. Every supplier is requested to observe these guidelines proactively as reference.

In addition, the Group of Soshin Electric companies has conducted an environmental quality survey on suppliers' premises and confirmed that their management system of chemical substances is acceptable.

Correspondence to chemSHERPA

We will correspond to chemSHERPA*, which our customers may possibly use starting this year when they request us to pass on information about the chemicals in our products.

*A scheme which is usable throughout supply chains for communication of information on the chemical substances contained in products.

Environmental Report

A pproach to Reduction of Environmental Loads

To prevent global warming, we tackled reduction of CO₂ emissions as well as energy saving.

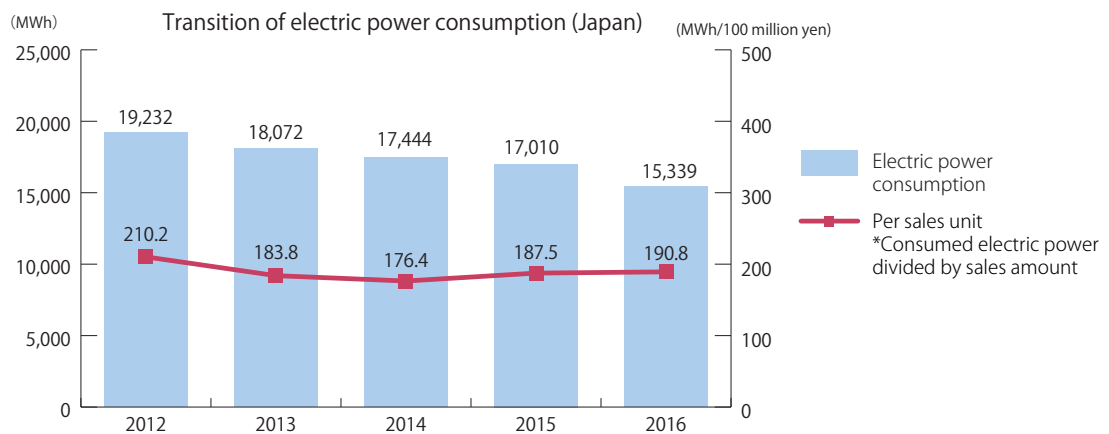
The domestic consumption of electric power in 2016 was reduced by 9.8% from a year earlier due to the success of additional countermeasures for reduction such as the introduction of energy saving equipment, and power saving and energy saving patrols. The consumed electric power divided by the sales amount increased by 1.8% over a year earlier due to a decrease in sales.

At overseas sites, the amount of consumed electric power registered an 8.6% decrease and the consumed electric power divided by the sales amount rose by 11.8% over a year earlier.

More than 90% of CO₂ emissions originate from electric power consumption. Domestic CO₂ emissions decreased by 10.0% year-on-year, while the consumed electric power divided by the sales amount increased by 1.7%. At overseas sites, CO₂ emissions decreased by 8.9% and consumed electric power divided by sales amount was up by 11.3% over a year earlier.

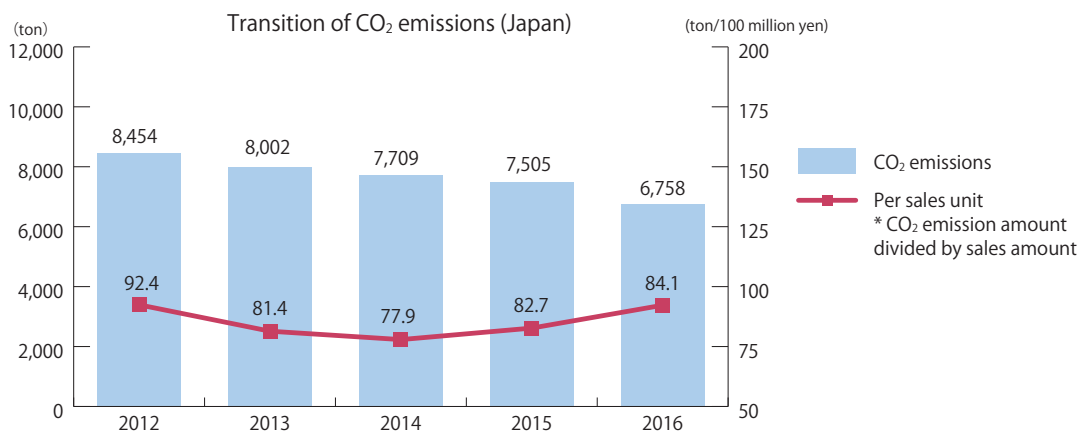
In 2017, we will try to maintain CO₂ emissions at no greater than 104.0% year-on-year. (Regarding the CO₂ emission amount divided by sales amount, we set the target of a reduction of 3.1% from a year earlier.)

◆ Electric power consumption



Transition of electric power consumption (Overseas)	2012	2013	2014	2015	2016
Electric power consumption (MWh)	1,405	1,237	1,110	1,247	1,140
Per sales unit (MWh/100 million yen)	156.1	114.5	91.7	110.8	123.9

◆ CO₂ emissions

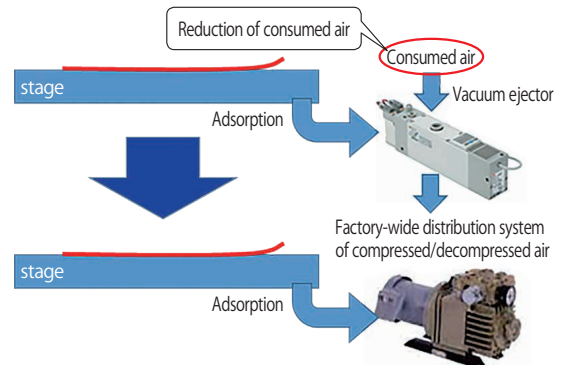


Transition of CO ₂ emissions (Overseas)	2012	2013	2014	2015	2016
CO ₂ emissions (ton)	595	524	468	528	481
Per sales unit (ton/100 million yen)	66.1	48.5	38.7	47.0	52.3

E xamples of Energy Saving Measures ●

(1) Change of product adsorbing function

Used previously were ejector vacuum generators (a genuine article) where compressed air is used for an on-table adsorbing function for sheet materials. Replacement with a factory-wide distribution system of compressed/decompressed air enabled a reduction of compressed air and lowered the air compressing load. (Reduction of the air compression load by 1,200kWh per annum)



(2) Opening and closing of the air conditioner OA damper of the tape molding building

Air conditioners were run to warm the tape molding process by air in winter to prevent freezing, which consumed as much as approx. 10kWh of electricity. Closure of the outside-air introducing damper to prevent the inflow of cold air when operations were idle resulted in an approx. 60% reduction of consumed electric power.

(The annual power saving was 25,895kwh.)



(3) Change of the settings on air conditioner blast fans at the old Asama Plant

An inverter was attached to the blast fan of the air conditioner at the old Asama Plant building, with the frequency set to change from 60 Hz to 20 Hz unless the air conditioner is operating for warming or cooling. For further saving of energy, the setting was changed from 20 Hz to 0 Hz while not warming or cooling.

(The saving from this was 3,060kWh per annum.)



Environmental Report

A pproach to Resource Utilization ●

For preservation of the environment, the Group of Soshin Electric companies considers it imperative to make our society recycling-oriented. For this, we will promote “reduce”, “reuse” and “recycle” (3Rs) regarding the waste discharged as a result of business activities as resources.

Furthermore, we use no providers of waste disposal services other than those that have earned administrative approval so that disposal services will be provided in compliance with relevant laws. Our control includes issuance of manifests (control manifests for industrial waste) and retention of disposal records.

Waste disposal service providers are also controlled through our periodic visits to the disposal sites.

In 2015, we audited 10 sites from 9 service providers and learned that they operated acceptably.

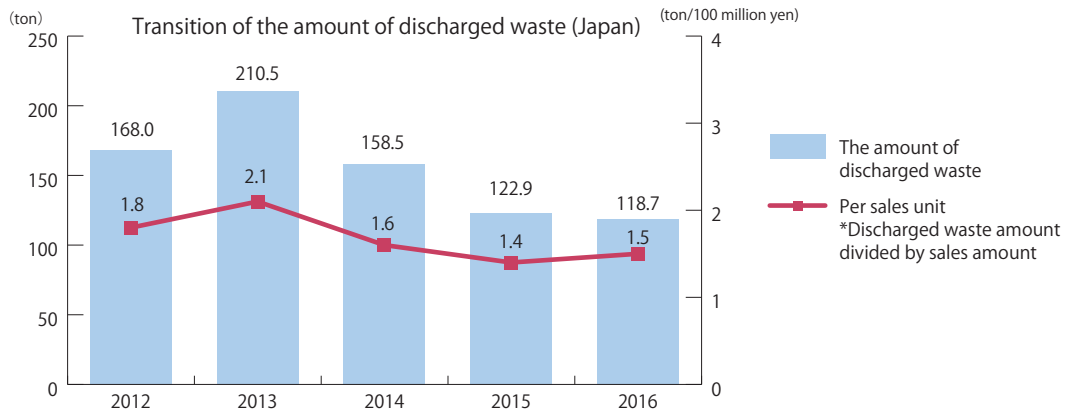
The amount of discharged waste in Japan registered a decrease of 22.6% from the previous year.

Electric power consumed in Japan divided by the sales amount also decreased by 12.5%. We will make efforts to successfully reduce waste so that we can achieve the target we set for 2016, which is a maximum increase of 16.3% year-on-year.



On-site inspection scene of an industrial waste disposal service provider

◆ The amount of discharged waste



Transition of the amount of discharged waste (overseas)	2012	2013	2014	2015	2016
The amount of discharged waste (ton)	3.8	7.6	7.0	9.4	13.0
Per sales unit (ton/100 million yen)	0.4	0.7	0.6	0.8	1.4

TOPICS

◆ Sakusaku Himawari symposium

We, Soshin Electric Co., a member of the Sakusaku Himawari LLP, has not only contributed to the mega-solar business run by Saku City but also worked actively on the local environmental preservation, education and awareness raising activities. On the occasion of inviting Ms. Hiroko Ida, a certified weather forecaster, to the 7th Sakusaku Himawari symposium on Sept. 24, 2016, she gave us a speech under the theme of “A Warming Globe and Recent Abnormal Climate - Can Natural Energies Save the Earth?” A large number of people turned up to hear the speech and attend the symposium.



Questionnaire: 2017 Social Responsibility & Environmental Report

We thank you very much for your reading through this 2017 Social Responsibility & Environmental Report of the Group of Soshin Electric companies.

It would be our great pleasure if you kindly let us have your impressions about this report. The impressions you send to us will be used as a valuable reference for our oncoming environmental preservation activities and efforts to generate future reports.

* Please check the boxes of the judgment terms that best represent your impressions.

Q 1 Your impressions about this report

1) Overall impression

Good

Average

Poor

2) Comprehensibility

Good

Average

Poor

3) Content

Good

Average

Poor

Q 2 Did any specific articles attract your particular attention? If, yes, please specify:

Article _____ on page _____

Q 3 Please give your impressions or advice about our environmental activities and this report in the space provided below:

We are very grateful for your answers. We would be most obliged if you kindly spend a few more minutes to fill in the following 3 lines, if it is not an imposition to you.

*Personal information given here will be used only for the purpose stated above.

Your Name : _____ Male / female, Age _____

Address : _____

Occupation : _____

Please send your answers to this questionnaire to the e-mail address or fax number given below:

To **Soshin Electric Co., Ltd. Environment Control Office**

Fax: 0267-68-4553 Tel: 0267-67-4580

E-mai: environment@soshin.co.jp

SAVE
THE
EARTH

2017 Social Responsibility & Environmental Report



双信電機株式会社
SOSHIN ELECTRIC CO., LTD.

URL : <http://www.soshin.co.jp>

No.1-1-1, Shibaura, Minato-ku, Tokyo 105-0023, Japan
Tel. 81-3-5730-4500 Fax. 81-3-5730-4504

Environment Control Office
Tel. 81-267-67-4580 Fax. 81-267-68-4553
E-mail: environment@soshin.co.jp

