

The logo for SOSHIN, consisting of the word "SOSHIN" in a bold, sans-serif font inside a white oval with a dark border.

SOSHIN

# 2018

## Social Responsibility & Environmental Report

Save The Earth

**双信電機株式会社**  
**SOSHIN ELECTRIC CO., LTD.**

Soshin Powertech Co., Ltd.  
Soshin Device Co., Ltd.  
Risshin Electronics Co., Ltd.  
Soshin Electronics (M)Sdn. Bhd.

# Business Summary

## 2018 Social Responsibility & Environmental Report

### Contents

#### ■ Business Summary and so on

Corporate Profile & Business Locations.....	1
Business Domains & Related Products.....	2
A Message from the President / Corporate Governance.....	3
Guidelines for Corporate Behavior.....	4

#### ■ Social Responsibility Report

Respect for Humanity and Assurance of a Comfortable Working Environment.....	5
Cooperation with local communities and promotion of social action programs.....	6

#### ■ Environmental Report

Environmental management system.....	7
Outline of environmental preservation activities.....	8
Environmental accounting.....	9
Mass balance / Management of contained chemical substances.....	10
Approach to reduction of environmental loads.....	11
Examples of energy saving measures.....	12
Approach to resource utilization.....	13
Questionnaire.....	14

### Editorial policy

This report presents the Group of Soshin Electric companies' approach to society and the environment.

#### 【Period covered】

From April 2017 to March 2018

#### 【Coverage】

Soshin Electric Co., Ltd.  
 Soshin Powertech Co., Ltd.  
 Soshin Device Co., Ltd.  
 Risshin Electronics Co., Ltd.  
 Soshin Electronics (M) Sdn. Bhd.

Issued in June 2018

## ■ Corporate Profile (As of the end of March 2018)

Company name : Soshin Electric Co., Ltd.  
 URL: <http://www.soshin.co.jp>

Tokyo Head Office  
 No. 1-1-1, Shibaura, Minato-ku, Tokyo 105-0023, Japan  
 Tel. 81-3-5730-4500 Fax. 81-3-5730-4504

Established in : December 1938  
 Incorporated in : April 1944  
 Capital : 3,806 million Japanese yen  
 (As of the end of March 2018)  
 Number of employees : 835 (Total)  
 (As of the end of March 2018)

## ■ Business Locations

#### 【Sales offices in Japan】

Tokyo Operating Headquarters  
 Osaka office / Nagoya office / Saku office / Kyushu office

#### 【Domestic plant and R&D location】

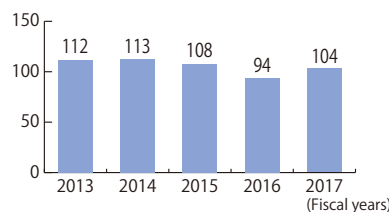
Asama Plant / Chikuma Technical Center

#### 【Group companies】

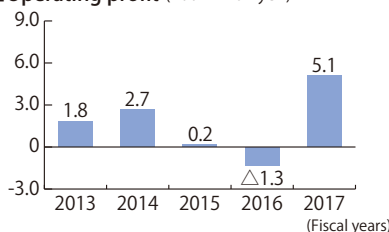
Soshin Powertech Co., Ltd.  
 Soshin Device Co., Ltd.  
 Risshin Electronics Co., Ltd.  
 Soshin Electronics (M) Sdn. Bhd.  
 Soshin Electronics of America Inc.  
 Soshin Electronics Europe GmbH  
 Soshin Electronics (SZ) Limited  
 Taiwan Soshin Electric Co., Ltd.

## ■ Financial Highlights

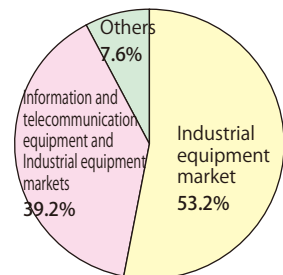
#### ■ Sales amount (100 Million yen)



#### ■ Operating profit (100 Million yen)



#### ■ Sales ratio per market (2017)



# Business Domain & Related Products

To meet the needs of the times and expectations of customers in the industrial instrument and information and telecommunication equipment markets, as well as ultimately to contribute to realization of a low-carbon society, the Group of Soshin Electric companies manufactures small and high-performance products with the least amount of industrial waste in consideration of environmental impact.

## [Industrial equipment sector]

### • Noise related-field

Needs are growing for countermeasures against disturbance due to noises arising in fields of industries such as semiconductor manufacturing facilities and machine tools, equipment supporting our daily life such as air-conditioners and elevators, and environmental and energy-saving facilities such as solar power generation where reduction of the load on the global environment is anticipated.

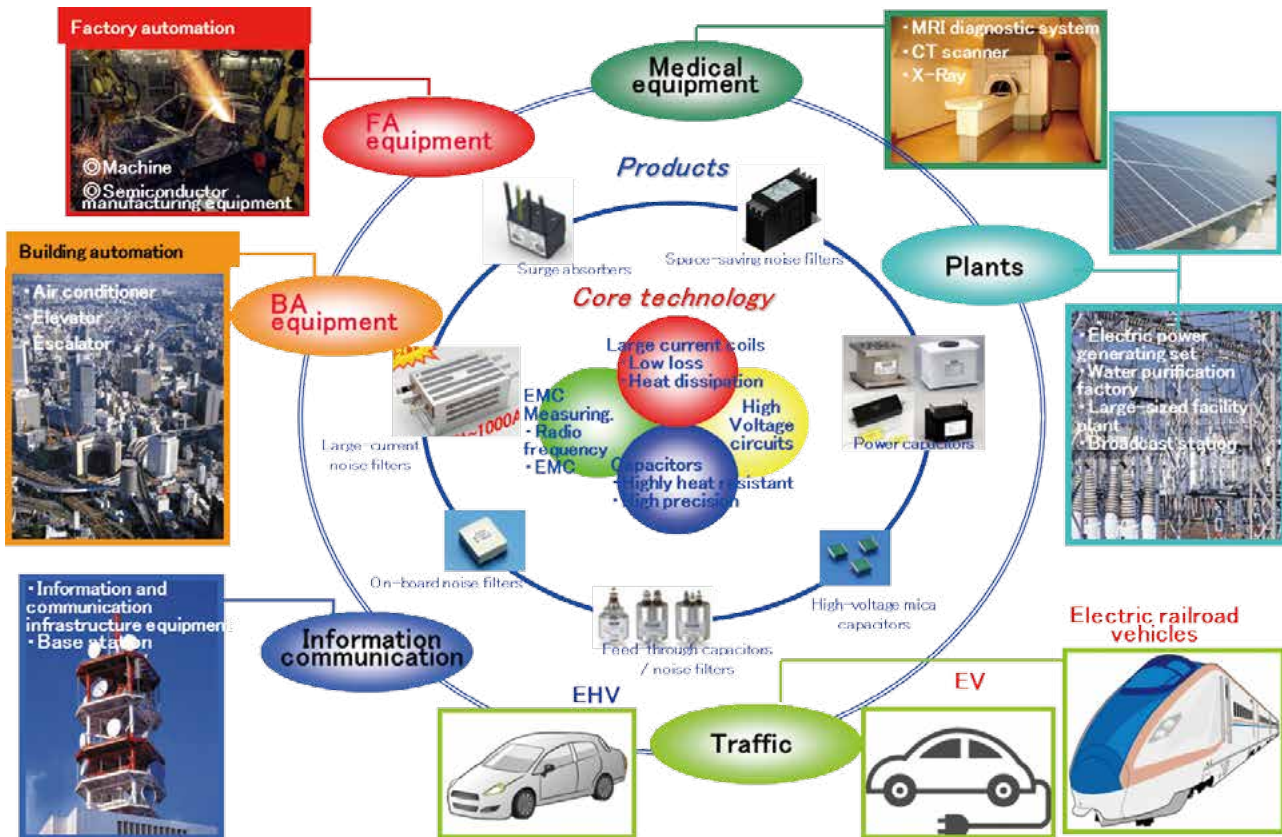
Our EMC products have played a key role in many industrial fields as a solution for issues related to noises developing in these equipment and facilities.

Furthermore, our range of business includes total support for customers such as provision of noise-measuring and diagnosing services on site or in our large radio-wave shield chamber.

### • Car and railway electronics

In automobiles where parts are required to be highly reliable, noise filters and capacitors are used for quick charging of plug-in hybrid electric vehicles (PHEV) and electric vehicles (EV) which are gaining market acceptance.

Railway vehicles and rail traffic control systems are other areas where a variety of our filters and capacitors work to support safety and ease.



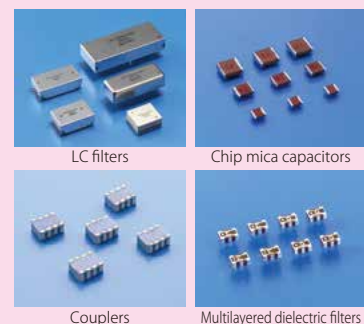
## [Information and telecommunication equipment sector]

### • For information and telecommunication infrastructures

RF parts such as couplers, filters and capacitors support communication systems including base stations for mobile phone systems.

### • For telecommunication terminals

Multilayered dielectric filters are adopted for ever-advancing smartphone, wireless LAN systems for tablet PC terminals and for Bluetooth communication modules.



# A Message from the President



President  
**Takashi Kamioka**

A succession of business scandals has recently surfaced involving steel and automobile companies that had been cited as examples of exemplary Japanese business enterprises. Facts have been disclosed about how the companies disregarded rules in such ways as falsification of data or conducted inspections by non-qualified persons despite supposedly having a business principle that the utmost concern should be placed on having a high regard for quality and establishment of trust with customers. Behaviors that originated from an easy belief that neglecting requirements to a certain extent would be of no problem caused an ideal situation to be lost as time went by.

Without taking such movements at other companies as somebody else's problems, and by verifying that our products are produced in strict compliance with the promises we have made with customers, we have reaffirmed that we are free of violation of rules. Under the current situation where the sense of business enterprises' CSR is called into question, the penetration of CSR consciousness and corresponding action to guard the company and keep its employees intact are what is important. We will keep on looking into this matter.

In regard to the working rule reforms promoted by the national government, we will disseminate the new overtime work rule across the company and arrange a system for following up on the actual status of overtime work.

Our environmental impact reduction activity successes in this fiscal term were the achievement of a decrease in energy consumption by integration of production locations, improvement of product defect rates and introduction of energy-saving equipment.

Interaction with local community people through events at various locations is also evidence of our continued social contribution.

We will remain clearly conscious that enterprises can continue to exist only with performance of social responsibilities that they should carry out and our action will go on accordingly. It is our sincere desire that our stakeholders will keep on encouraging us with their support.

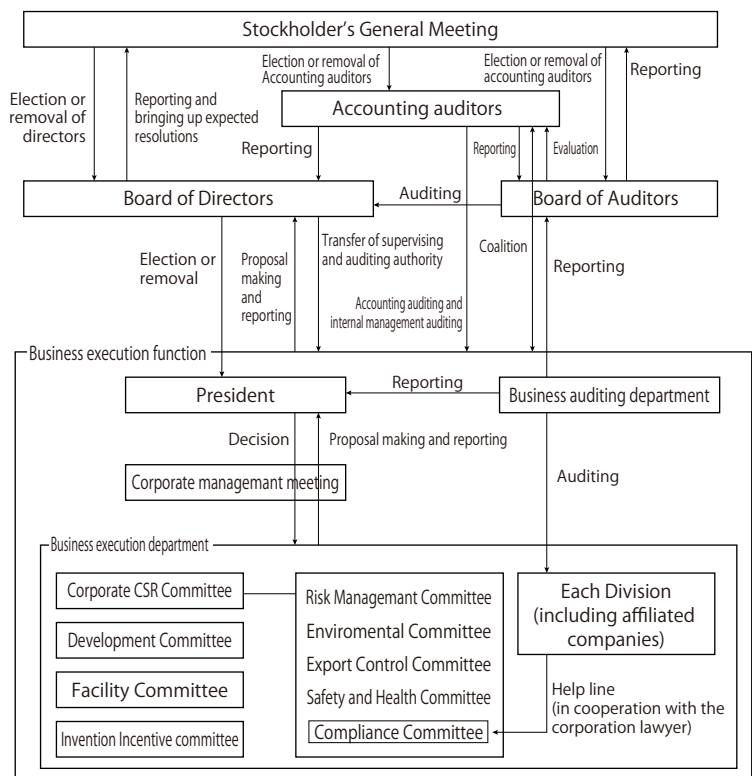
## Corporate Governance

The Group of Soshin Electric companies has positioned enhancement of corporate value as one of our key management issues.

We regard the enhancement of corporate governance as an important measure that raises the legality of the business activities and transparency of corporate management, leads us to become an entity trusted by every stakeholder (stockholders, customers, company employees, suppliers and relevant local communities) and is conducive to the rise of corporate value.

To make them a reality, we strive for ensured compliance with laws by identifying the responsibilities of the Board of Directors' Meeting and Auditors' Meeting such as adjustment of the management organization, improved management efficiency and enhancement of the management monitoring function. Establishment of relationship of mutual trust through ensured gaining of stockholders' privilege and equality and promoted dialogues are other matters we seek.

## Governance system





## Soshin Electric Co. Group's Guidelines for Corporate Behavior

### I Realization of corporate philosophy

#### **[1] Provision of products that better contribute to social environment**

From a long-term global perspective, we will commit ourselves to create new value by providing products and services that protect the global environment and realize safety and security in society. We will gain trust from our customers and society by seeking quality and safety.

### II Policy to engage in business activities

#### **[2] Disclosure of corporate information**

We will release, in an accurate and timely manner, information sought by the public, including information on our management, finance, products or services to improve transparency in management and gain society's trust in NGK group companies.

#### **[3] Total enforcement of compliance and risk management**

We will abide by the laws and rules of each country and area in which we do business and will enforce our compliance thoroughly, respecting international arrangements that are applicable to us.

We will develop human resources who are sincere and have high ethical standards. In addition, through our efforts to build an internal control system and implement risk management, we will protect our corporate assets and credit, as well as the rights of third parties.

#### **[4] Respect for humanity and assurance of comfortable working environment**

We will hire and treat people in a proper and fair manner and provide a safe and pleasant working environment in which our people can work comfortably without sacrificing their family life. We will make available opportunities that people with versatile talent can try and will support the development of human resources through the acquisition of knowledge and expertise.

We will prevent bullying, discrimination, harassment or any other acts that violate human rights. If there is a human rights violation, we will take appropriate action in an expeditious manner.

#### **[5] Implementation of fair, free and transparent transactions**

As a good and equal partner, we will implement fair, free and transparent transactions in search of mutual benefit with our business partners.

In addition, we will promote our commitment to discharge our corporate responsibility for society throughout the supply chain used by the NGK group companies.

### III As a member of society

#### **[6] Preservation of global environment**

We will contribute to the preservation of the global environment by committing ourselves to take the lead in reducing environmental burdens at every location and in every process that is involved in our business activities. We will cooperate in efforts with local communities to preserve the environment and will also actively support our employees' efforts.

#### **[7] Cooperation with local communities and promotion of social action programs**

We will actively commit ourselves to contributing to society, satisfying the needs of local communities with our interest in the social tasks required by each country and local community in accordance with our objective to become a corporate citizen that can be trusted by local communities.

#### **[8] Communication with stakeholders**

Through communication with all of our stakeholders, including customers, business partners, shareholders, employees and members of local communities, we will enhance their understanding of the NGK group companies and review corporate activities based on comments forwarded to us. We will use these in our efforts to accomplish our social responsibilities.

# Social Responsibility Report

## R espect for Humanity and Assurance of a Comfortable Working Environment

### ◆ Basic employment policy

We at the Group of Soshin Electric companies have tried to ensure employment stability through the establishment of manpower plans ascertaining to mid- to long-term business development. Such efforts included planned employment of new graduates and active deployment of internal job rotation, placement of the right people with necessary ability and experience in the right job, and promotion of activities that helped employees find their jobs challenging without needing to exercise extra care.

### ◆ Esteem for individuality and diversity

Our employment level of disabled people was 2.88% (as of fiscal 2017), which exceeded the legally set 2.0% minimum.

As a result of the establishment of a re-employment system for employees who have passed mandatory retirement age, flexible working arrangements, including full-time and part-time work programs, are provided to fit individuals' post-retirement plans.

### ◆ Realization of work-life balance

Many female employees have taken up the opportunity for pre-natal and post-partum maternity leave and infant care before returning to work. Furthermore, refreshment holiday and planned paid holiday systems are provided for employees to refresh their minds and bodies.

### ◆ Health and safety

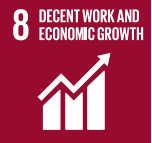
The Group of Soshin Electric companies has actively made health and safety activities as a matter of top priority aiming for zero occupational accidents, in addition to ensuring employees' health and safety and promoting more comfortable working environments.

Our major activities include those where risk factors arise. Training for dealing with near-miss incidents and danger prediction has been provided to employees in conjunction with the National Industrial Safety Week and National Industrial Health Week. Suggestions made by them have achieved great results. Moreover, mutual patrolling of plants for facility accident prevention has been a semiannual event to ensure safety.

For promotional purposes of employees' good health, we have a healthcare program in place by having company nurses on duty and actively pursuing good physical and emotional health for employees. Employees have been given a stress check.

These activities have kept the Group of Soshin Electric companies free from serious work-related accidents for the past 7 years. We will continue activities for employees for their ensured safety and good health.

It promotes the employment that the function seems to be a human being with sticker.



### ◆ Enhancement of healthy mental state

The Group of Soshin Electric companies has arranged study sessions for acquisition of knowledge about mental disturbance, self-care and line care through consolidated services by industrial physicians, consultant physicians and health nurses to ensure employees' mental health.

In addition, training of managers, control of overtime work and strict observance of the previously established no-overtime day program have been implemented against excessively long-time work.



Manager training



Emergency drill for dangerous and specially controlled goods

# Social Responsibility Report

## C ooperation with Local Communities and Promotion of Social Action programs

### International Volunteer Day, a day of concurrent action for contribution to society

We, the business enterprises residing in the building where we are headquartered, jointly sold fair-trade goods to support the producers in developing countries.

\*"Fair trade" is the term used to describe the mechanism that supports producers' lives by purchasing their products at reasonable prices.



### Participation in an evacuation drill staged by the General Support Center for Senior Citizens

Soshin Powertech Co. supported the evacuation drill staged by the neighboring General Support Center for Senior Citizens.



### Acceptance of internship

Local high school students took a factory tour and undertook work experience in the Nagano and Miyazaki areas.



It realizes a sustainable city and a human settlement.



### Interaction with local communities through sports events

The 17th Soshin Cup Tennis Tournament (194 participants)



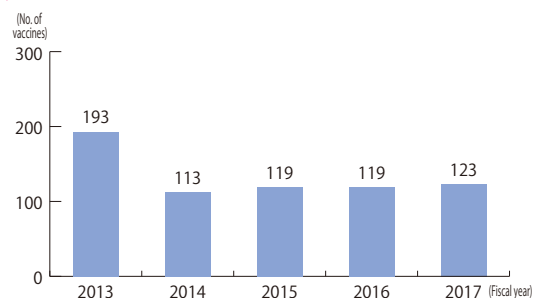
### Christmas presents

Soshin Powertech Co. and Soshin Device Co. presented Christmas gifts to their respective neighboring nursery schools.



### Eco-cap campaign

Collected eco-caps were sold for recycling. Revenue was distributed to various social activities. In fiscal 2017, the total revenue was worth 123 vaccines.



# Environmental Report

## Environmental Management System

### Environmental policy of the Group of Soshin Electric companies

1. Compliance with legislation, pacts, agreements with customers and voluntary standards
2. Identification of environmental objectives and organized continuous promotion of activities with local communities to reduce environmental loads
3. Development, design, production and marketing of environmentally-friendly products
4. Implementation of preventive measures and monitoring of environmental pollution
5. Continuous encouragement of education, training and enlightenment activities to raise awareness of the roles and responsibilities of employees, as well as all other people involved in our business activities

#### ◆ System of promoting environmental preservation activities

Decisions on policies and tactics of the Group of Soshin Electric companies regarding environmental preservation will be made by the “Environmental Committee” which the Director responsible for environmental matters chairs. The policies and tactics decided will be put in action across the company via factory managers, the location manager and the managers responsible for environmental matters for each site.

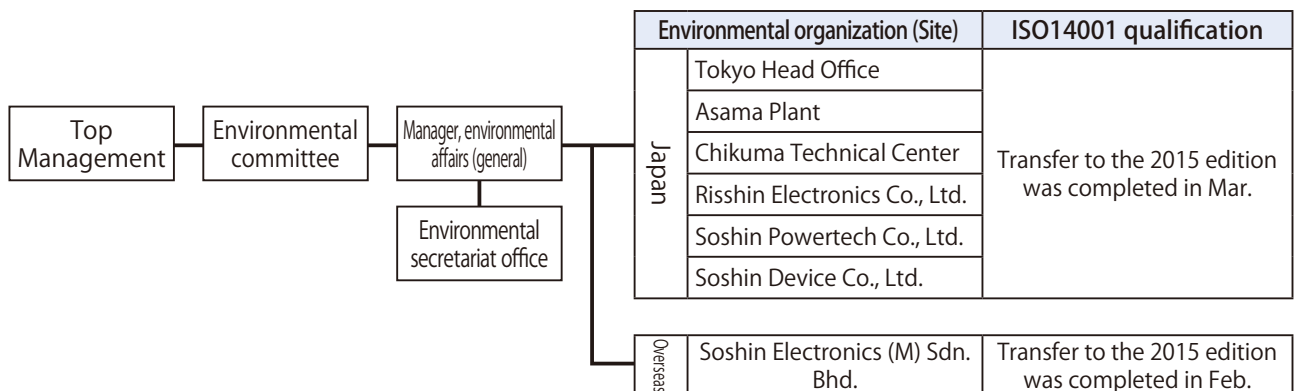
Activities for which the environmental organization is responsible include a monthly environmental meeting, as well as the Environmental Committee held semi-annually. These meetings are to control the progress toward the targeted amounts of CO<sub>2</sub> emissions and industrial waste discharged, exchange information on the environment and continue the promotion of the environment preservation activities.

#### ◆ Qualification for ISO14001 and environmental audits

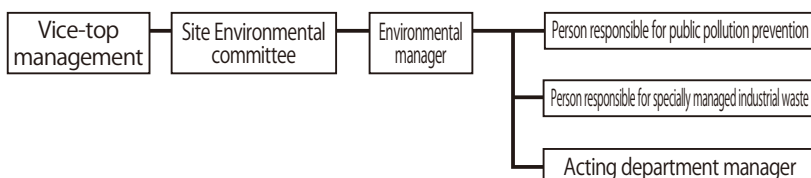
The Group of Soshin Electric companies successfully transferred the qualification for ISO14001, the international environmental standards, to the 2015 edition in fiscal 2017.

Our environmental audit is comprised of audits conducted by an external qualifying organization, environmental assessments by our Environment Control Office and internal environmental audits by the execution department. (The number of internal environmental auditors: 175)

#### 【Environmental preservation organization】



#### 【Site-specific environmental preservation organization】



Audit scene by the ISO14001 qualification organization



# Environmental Report

## Outline of Environmental Preservation Activities

It reduces a climate change and the influence.



We, the Group of Soshin Electric companies, have been trying autonomously to preserve the environment by setting environmental objectives and targets to accomplish the objectives.

### ◆ Activity report for 2017 and targets for 2018

#### 【CO<sub>2</sub> emission amount】

We achieved the target for reduction of CO<sub>2</sub> emissions which was part of 2017 activities for environmental load reduction.

As an approach to CO<sub>2</sub> emission reduction continuing from 2017, we will study a step-by-step change over to energy-saving facilities including lighting with LEDs in 2018.

Action will continue for productivity improvement, efforts to reduce losses and loads of facility operations and elimination of wastes through energy-saving patrol.

#### 【Amount of discharged industrial wastes】

Fiscal 2017 was a year when industrial wastes increased due to the full-fledged metal processing line for industrial products.

In fiscal 2018, we will try to improve the raw material recovery rate and reduce such wastes.

Continued achievement of zero emissions is another target.

#### 【Preservation of biodiversity】

Soshin Electric is in support of PICCHIO, an NPO, based in Karuizawa, Nagano Prefecture, which aims for preservation of the local ecological system so that humans and wildlife can coexist.

#### 【Enhanced control of contained chemical substances】

Restriction and control of substances usable for products are getting increasingly stricter, as evidenced by the regulations related to phthalic acid esters required by the RoHS directive and year-by-year additions by REACH Regulations of substances to be controlled.

We control such chemical substances in line with the latest regulations based on the Soshin Electric Co. Green Procurement Guidelines. To control chemical substances contained in product component parts, we audit suppliers for their environmental quality to ensure adherence to the Green Procurement activity.

#### 【Environmental complaints and incidents】

In fiscal 2017, we had no complaints or incidents related to environmental matters. We will continue our activities for local environment preservation to prevent any environmental matter-related complaints or incidents from happening in fiscal 2018.

### ◆ Main environmental preservation activities

Items	Achievements in 2017			Targets for 2018
	Targets	Achievements	Self-evaluations	
Environmental management system (ISO14001)	<ul style="list-style-type: none"> <li>We will continue environmental education and enlightenment activities.</li> <li>We will provide each department and internal environmental auditor with training to get ourselves prepared for a qualification assessment for the successful transfer of the Environmental Management System from the 2015 edition to the 2017 edition.</li> <li>We will comply with environmental legislation.</li> </ul>	<ul style="list-style-type: none"> <li>The environmental policy was disseminated and education of environmental targets provided.</li> <li>We provided environmental education based on the 2015 edition of the Environmental Management System and the transfer was successfully completed.</li> <li>We reviewed a list of environmental legislation and regulations to ensure that our environmental assessment covered every item.</li> </ul>	○	<ul style="list-style-type: none"> <li>We will continue environmental education and enlightenment activities.</li> <li>We will operate the 2015 Environmental Management System in an ensured manner to raise the level of expertise of each department and internal auditor.</li> <li>We will comply with environmental legislation.</li> </ul>
Prevention of global warming	<ul style="list-style-type: none"> <li>We will reduce domestic CO<sub>2</sub> emissions to a maximum of 7,098t. (With the CO<sub>2</sub> emission amount divided by sales amount no greater than 80/100 million yen)</li> </ul>	<ul style="list-style-type: none"> <li>We achieved the target for domestic CO<sub>2</sub> emissions of 6,827t for fiscal 2017 against 6,758 tons for fiscal 2016. (The CO<sub>2</sub> emission amount divided by the sales amount registered roughly 78/100 million yen and achieved the target.)</li> </ul>	○	<ul style="list-style-type: none"> <li>We will keep the domestic CO<sub>2</sub> emissions at 6,989t, max. (with the CO<sub>2</sub> emission amount divided by sales amount maintained no greater than 74t/100 million yen).</li> </ul>
Waste management activities	<ul style="list-style-type: none"> <li>We will keep the amount of discharged wastes at no greater than 240t (with zero emissions continuing).</li> </ul>	<ul style="list-style-type: none"> <li>The wastes discharged in fiscal 2017 was 247 tons against 190t in fiscal 2016 and we failed to achieve the target. We continued zero emissions.</li> </ul>	×	<ul style="list-style-type: none"> <li>We will keep the amount of discharged wastes at no greater than 239t. (We will continue zero emissions.)</li> </ul>
Activities for biodiversity	<ul style="list-style-type: none"> <li>We will support activities of PICCHIO, an NPO.</li> </ul>	<ul style="list-style-type: none"> <li>We supported activities of PICCHIO, an NPO.</li> </ul>	○	<ul style="list-style-type: none"> <li>We will continue to support PICCHIO, an NPO. We will run an internal lecture about biodiversity and disseminate awareness of the importance of its activities.</li> </ul>
Adequate control of chemicals	<ul style="list-style-type: none"> <li>We will continue to inspect goods procured from overseas sources with an X-ray fluorescence spectrometer, survey such sources' environmental quality and comply with the Green Procurement Guidelines.</li> </ul>	<ul style="list-style-type: none"> <li>There have been no abnormalities with goods procured from overseas sources, nor were any irregularities found in the quality of goods from these sources. Thus, we complied with the Green Procurement Guidelines.</li> </ul>	○	<ul style="list-style-type: none"> <li>We will continue to inspect goods procured from overseas sources with an X-ray fluorescence spectrometer, survey such sources' environmental quality and comply with the Green Procurement Guidelines.</li> </ul>
Reduction of hazardous chemicals	<ul style="list-style-type: none"> <li>We will reduce the use of hazardous chemicals (PCB and lead).</li> </ul>	<ul style="list-style-type: none"> <li>We discarded part of equipment that used low concentration PCB. We redesigned part of lead-containing products to make them lead-free.</li> </ul>	○	<ul style="list-style-type: none"> <li>We will reduce the use of hazardous substances including PCB and lead.</li> </ul>

# Environmental Report

## Environmental Accounting

### ◆ Environment preservation costs and economical effects resulting from environment preservation measures

The Group of Soshin Electric companies implemented environmental accounting. Environmental accounting is for the purpose of gaining a quantitative grasp of the effectiveness of investment and expenses made for environment preservation.

The investment amount by the Group of Soshin Electric companies for replacing equipment with energy-saving alternatives totaled 26.04 million yen in the fiscal 2017 global environmental preservation costs.

Economical effects in fiscal 2017 were an increase of 0.76 million yen over fiscal 2016. (The expected annual effect is 1.18 million yen.)

Effective implementation of environmental preservation activities enabled a reduction of 23.66 million yen in expense, lower by 2.23 million yen than last year.

Promotion of waste recycling and revision to valuable-resource prices assisted the resource recycling effects to rise by 24.77 million yen.

The economical effects in fiscal 2017 totaled 55.24 million yen.

Total of actual achievement: in fiscal 2017 (Apr. 1, 2017 to Mar. 31, 2018)

\*Generated in observance of the guidelines prepared by the Ministry of the Environment

Unit: 10,000 yen

Categories	Major measures	Investment amounts		Expenses		Economical effects	
		Fiscal 2016	Fiscal 2017	Fiscal 2016	Fiscal 2017	Fiscal 2016	Fiscal 2017
Pollution prevention	Costs for pollution prevention	0	0	244	174	-	-
Global environmental preservation	Costs for CO <sub>2</sub> reduction such as introduction of energy saving equipment	103	2,604	156	144	7453	529
Resource recycling	Costs for effective use of resources, including water saving, and reduction, recycling, processing and disposition of wastes	0	0	1,028	988	2,518	4,995
Upstream / downstream	Costs for controlling environmental burdens that arise in the business upstream and downstream	0	0	0	0	-	-
Administration	Costs for environment preservation efforts such as acquisition and maintenance of ISO14001 qualification, provision of environmental education and monitoring environmental impact	0	0	757	771	-	-
R&D	Costs for R&D and planning of environmental impact reduction efforts and for R&D and study of product contributing to environment preservation	0	0	0	0	-	-
Social activities	Costs for preservation of nature, greening and support for the local environment, public announcements of environmental information and advertisements for environmental matters	0	0	404	289	-	-
Environmental remediation	Costs for improvement of contaminated soils and recovery of destroyed nature	0	0	0	0	-	-
Total		103	2,604	2,589	2,366	2,971	5,524

## Mass Balance (Inputs and outputs)

It realizes management which was considered to environment of chemicals and waste.

12 RESPONSIBLE CONSUMPTION AND PRODUCTION

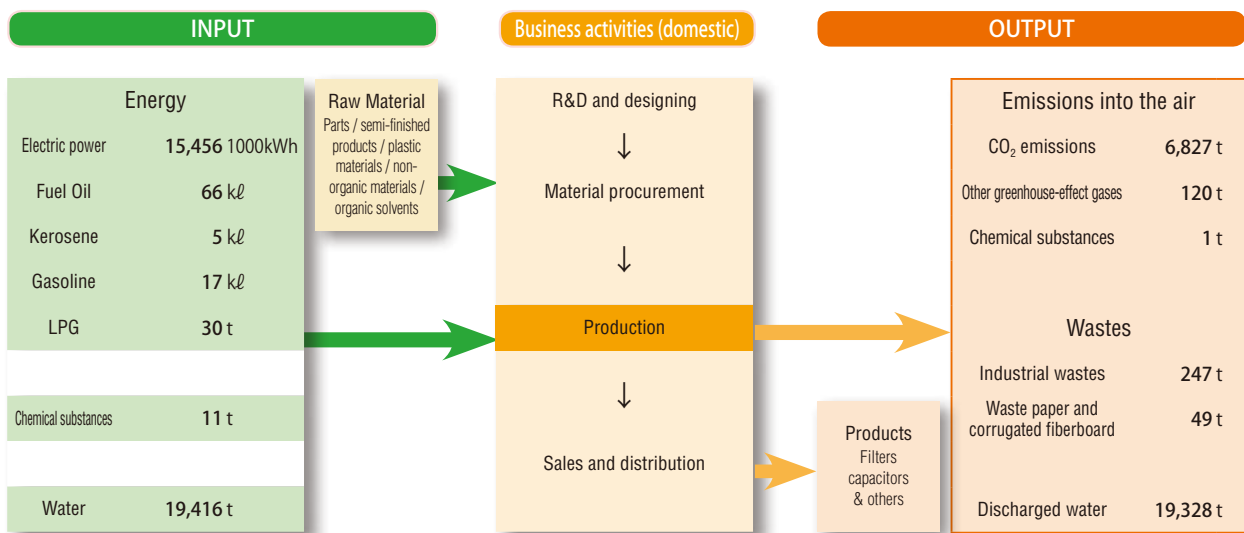


This section describes resources and energy inputs for domestic business activities, and products, wastes and other discharged items (outputs) that resulted from domestic business activities of the Group of Soshin Electric companies in fiscal 2017.

### Outline of inputs and outputs

Inputs comprise parts, raw materials, energy, chemical substances and water necessary for business activities while output comprise product, CO<sub>2</sub> emissions, water and wastes developed incidentally to production activities.

The Group of Soshin Electric companies strives to reduce as much as possible inputs from the aspects of energy saving to prevent the exhaustion of natural resources. This is an attempt to reduce outputs other than products.



## Management of Contained Chemical Substances

### Survey of contained chemical substances

In fiscal 2017, the Group of Soshin Electric companies completely avoided the use of 4 phthalic acids, which RoHS will prohibit from use starting in 2019.

Introduction of chemSHERPA is another one of our approaches for quicker response to customers' requests for survey of chemical substances contained in products.

\*ChemSHERPA

A scheme which is usable throughout supply chains for communication of information on the chemical substances contained in products.

### Green procurement

The Group of Soshin Electric companies has proceeded with procurement of parts and materials with the minimum possible environmental impact by conducting a survey of suppliers' environmental quality and making sure that chemical substances were handled adequately.

Requests have been made to suppliers asking them to take necessary action to meet the requirements in the Green Procurement Guidelines.

### Analysis with an X-ray fluorescence spectrometer

Parts and materials that possibly contain prohibited substances will be subjected to screening with an X-ray fluorescence spectrometer to confirm that they are free from prohibited substances.

# Environmental Report

## A pproach to Reduction of Environmental Loads

It reduces climate change and influence.



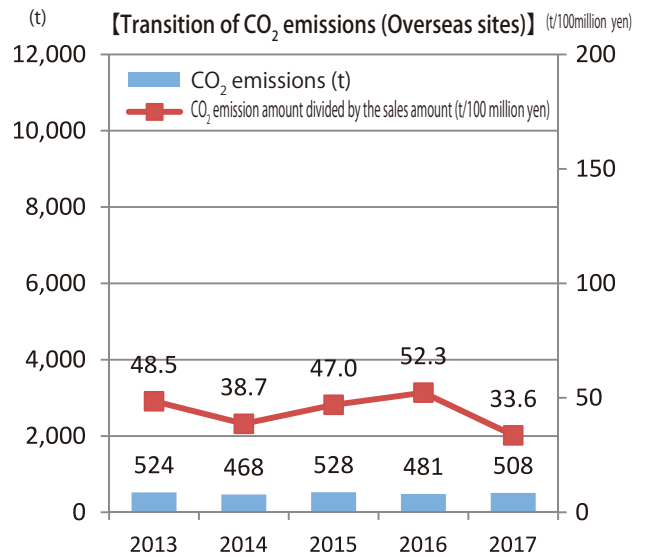
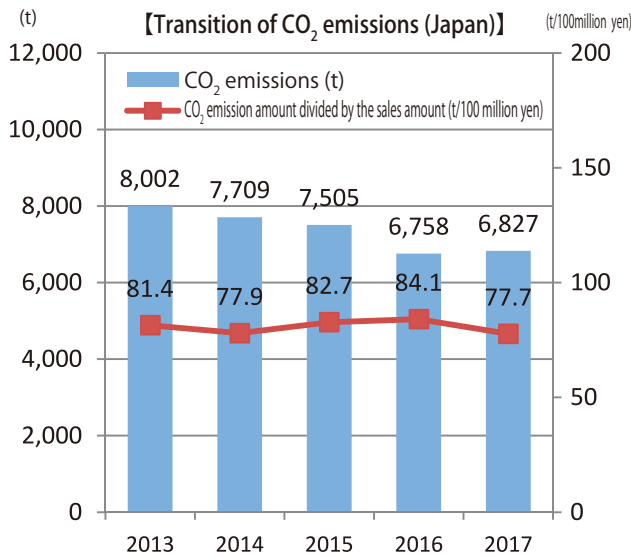
To prevent global warming, we tackled reduction of CO<sub>2</sub> emissions as well as energy saving.

Domestic CO<sub>2</sub> emissions in fiscal 2017 registered 6,827t due to an increase in the sales of noise-related products and thick-film PCBs with the CO<sub>2</sub> emission amount divided by the sales amount being 78t/100 million yen.

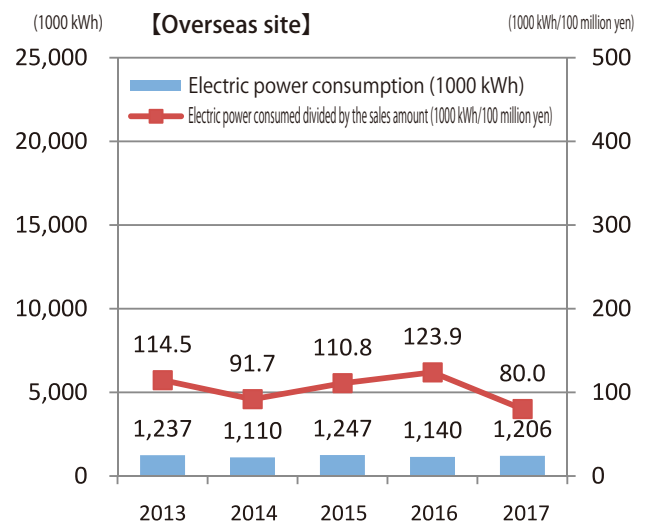
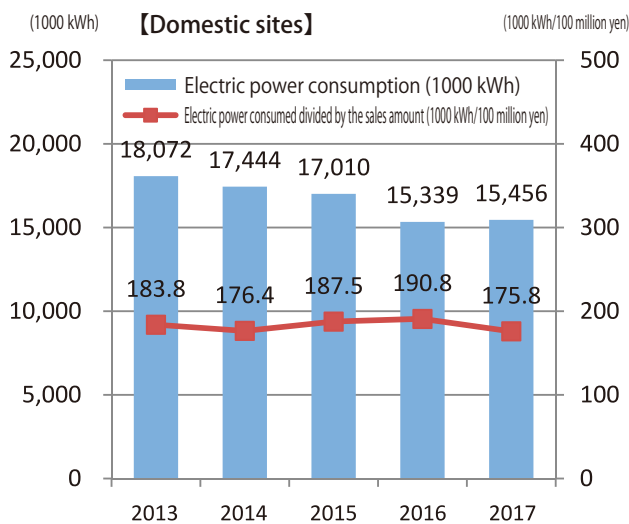
In fiscal 2017, CO<sub>2</sub> emissions at the overseas sites were 508t and the CO<sub>2</sub> emission amount divided by the sales amount was 34t/100 million yen.

Our target for CO<sub>2</sub> emissions for fiscal 2018 is no greater than 6,989t (with the CO<sub>2</sub> emission amount divided by the sales amount of 74t/100 million yen).

### ◆ CO<sub>2</sub> emissions



### Ref. Electric power consumption



## E xamples of Energy Saving Measures

### (1) Replacement of transformers by Soshin Powertec

Soshin Powertec replaced transformers with a high efficiency type, which enabled the power conversion rate to rise and the electric power loss to decrease, resulting in a reduction of CO<sub>2</sub> by 51% (8t) per annum.

Before replacement



After replacement



### (2) Replacement of gas heat-pump type air conditioners at the Asama plant

The Asama Plant replaced electric package type air conditioners and heavy-oil boilers with high efficiency gas heat-pump type air conditioners (resulting in an approx. 62% reduction of CO<sub>2</sub> per annum).

Before replacement

Electric package type air conditioners



Heavy-oil boiler



After replacement

Gas heat-pump type air conditioner



Use discontinued

# Environmental Report

## A pproach to Resource Utilization

The degradation prevention biodiversity loss prevention by the forest management, desertification handling, the land



For preservation of the environment, the Group of Soshin Electric companies considers it imperative to make our society recycling-oriented. For this, we will promote “reduce”, “reuse” and “recycle” (3Rs) regarding the waste discharged as a result of business activities as resources.

Of 247t discharged in fiscal 2017, 150t was reused and 97t recycled with zero emissions continuing. Our target for the total discharge amount for fiscal 2018 is 239t, max.

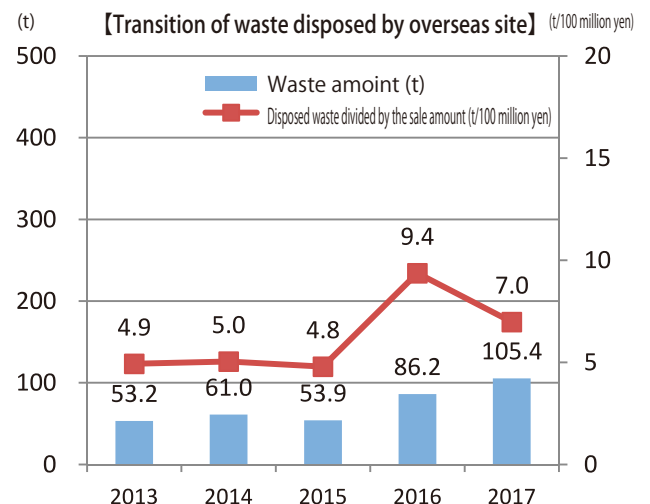
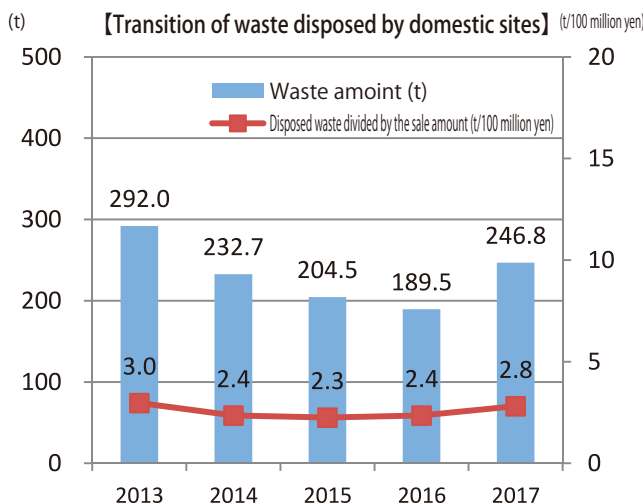
Furthermore, we use no providers of waste disposal services other than those that have earned administrative approval so that disposal services will be provided in compliance with relevant laws. Our control includes issuance of manifests (for control of industrial waste) and retention of disposal records.

We checked waste disposal service providers through periodic visits to their disposal sites and found that their services were adequate and acceptable.



inspection scene of an industrial waste disposal service provider

### ◆ The amount of discharged waste



## TOPICS

### ◆ Placement of “Welcome Flowers” at the Sakudaira railway station

In support to the “Welcome Flower” program conducted by the Saku City Tourism Association in Nagano, we arranged 44 pots of pansies in the station yard with students of Sakudaira General Technology High School (in Saku City).

This is an attempt to treat with kindness many visitors coming to enjoy events such as Saku Balloon Festival and Saku Koi (=Carp) Matsuri (=Festival) held every year in the Golden Week. The arrangement of flower pots is the embodiment of a regular plan to please them with colorful flowers.



※ As for 5 items which relate to us of SDGs ( Sustainable Development Goals ), it shows the logo of the goal in the place of the title of each page.

# Questionnaire: 2018 Social Responsibility & Environmental Report

We thank you very much for your reading through this 2018 Social Responsibility & Environmental Report of the Group of Soshin Electric companies.

It would be our great pleasure if you kindly let us have your impressions about this report. The impressions you send to us will be used as a valuable reference for our oncoming environmental preservation activities and efforts to generate future reports.

\* Please check the boxes of the judgment terms  that best represent your impressions.

Q1 Your impressions about this report

1) Overall impression

Good

Average

Poor

2) Comprehensibility

Good

Average

Poor

3) Content

Good

Average

Poor

Q2 Did any specific articles attract your particular attention? If, yes, please specify:

Article \_\_\_\_\_ on pages \_\_\_\_\_

Q3 Please give your impressions or advice about our environmental activities and this report in the space provided below:

**We are very grateful for your answers. We would be most obliged if you kindly spend a few more minutes to fill in the following 3 lines, provided that it is not an imposition to you.**

\*Personal information given here will be used only for the purpose stated above.

Your Name : \_\_\_\_\_ Male / female, Age \_\_\_\_\_

Address : \_\_\_\_\_

Occupation : \_\_\_\_\_

Please send your answers to this questionnaire to the e-mail address or fax number given below:

To **Soshin Electric Co., Ltd. Environment Control Office**

Tel: 0267-67-4580 Fax: 0267-68-4553

E-mail: environment@soshin.co.jp

# 2018 Social Responsibility & Environmental Report



**双信電機株式会社**  
**SOSHIN ELECTRIC CO., LTD.**

URL : <http://www.soshin.co.jp>

No.1-1-1, Shibaura, Minato-ku, Tokyo 105-0023, Japan  
Tel. 81-3-5730-4500 Fax. 81-3-5730-4504

---

Environment Control Office  
Tel. 81-267-67-4580 Fax. 81-267-68-4553  
E-mail: [environment@soshin.co.jp](mailto:environment@soshin.co.jp)

